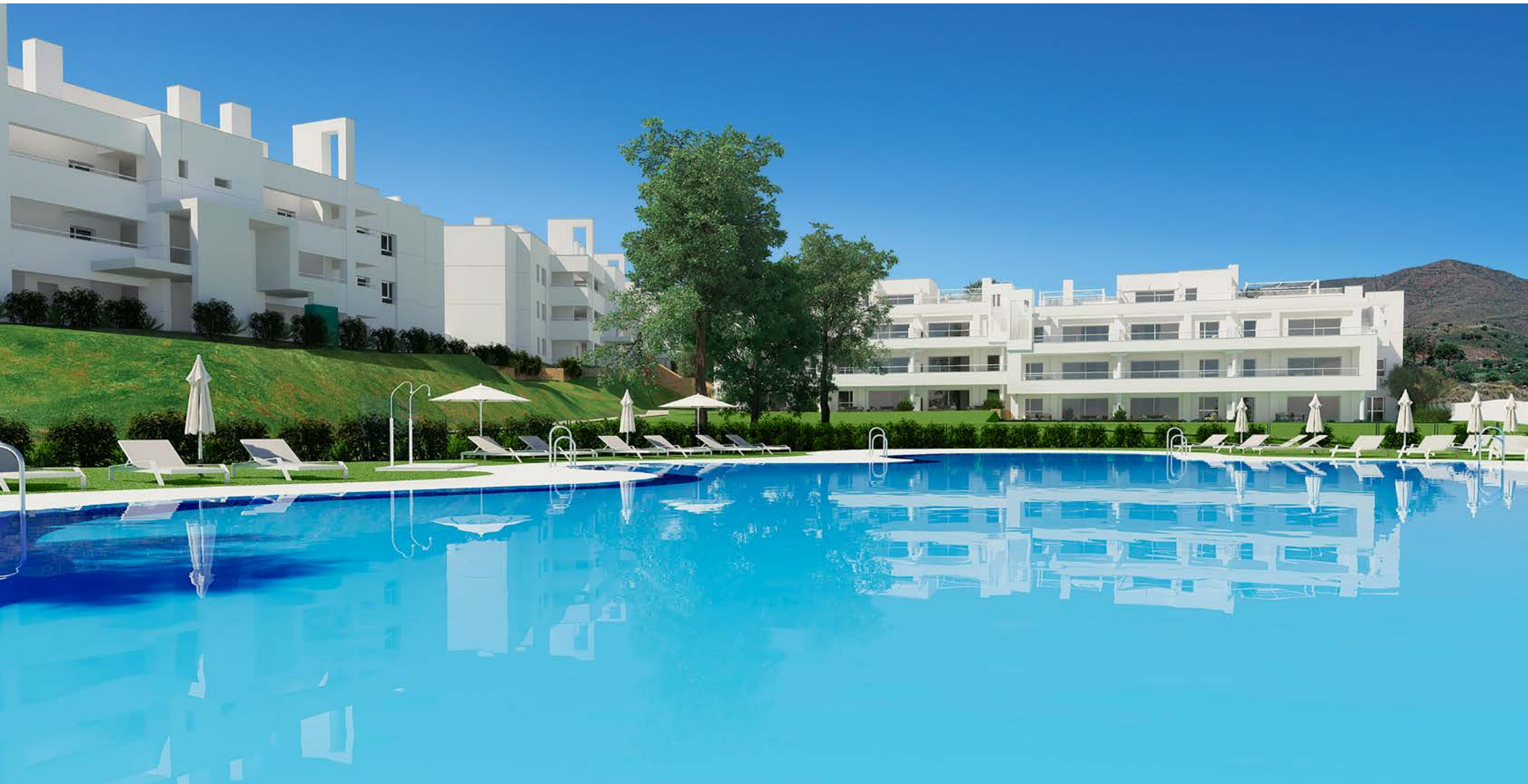
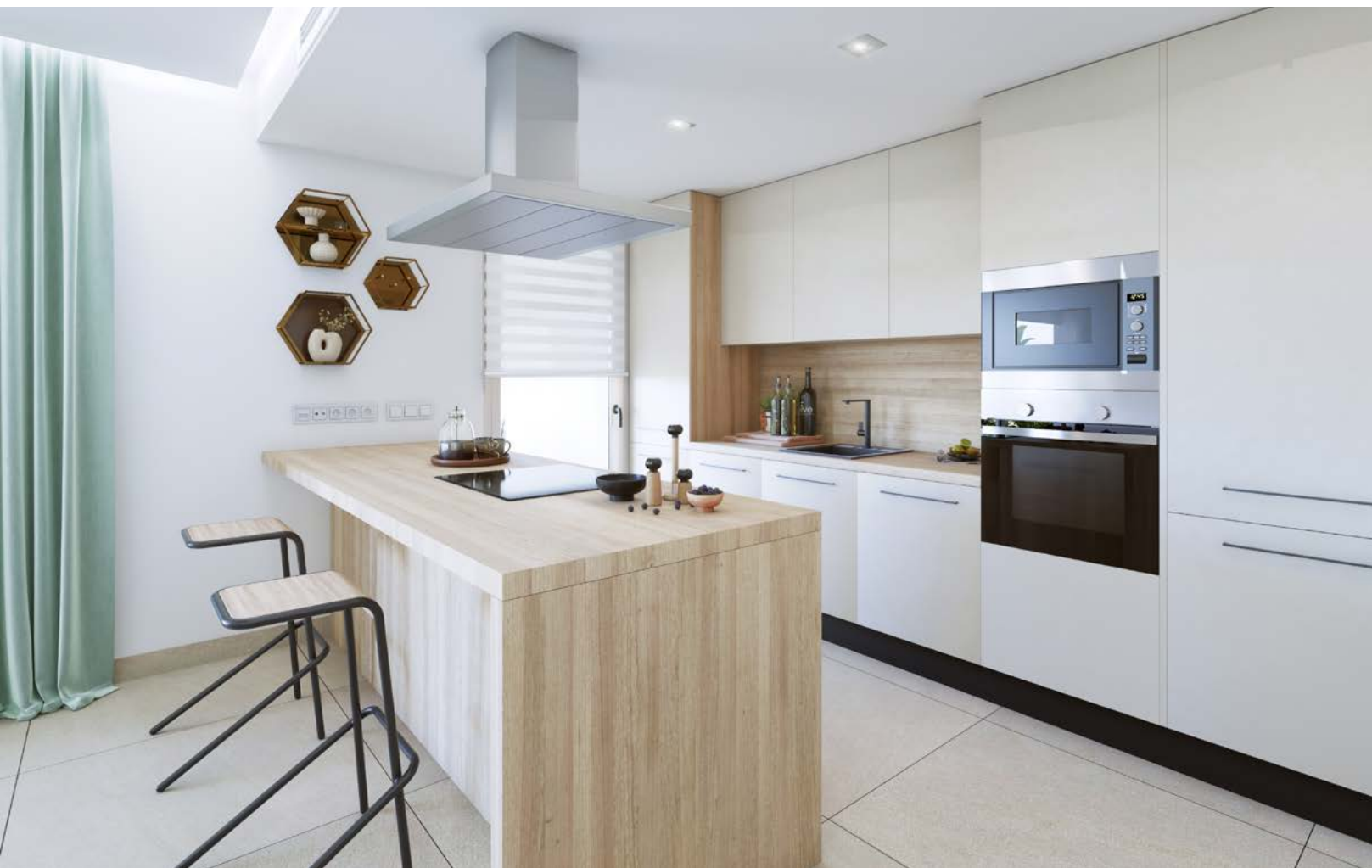


**PROPERTY SPECIFICATIONS: SOLANA VILLAGE B6-10**





## KITCHENS

The kitchens at the **Solana Village South** apartments are fitted with large-capacity upper and lower kitchen units.

The kitchen has imitation natural oak worktops, black baseboards, and the cupboard doors are melamine in Detroit cashmere with metallic handles.

The kitchens include an appliance package by **Balay** with a column-integrated electric oven and a microwave, a ceramic hob, an extractor hood, and an integrated refrigerator, dishwasher, and washing machine. There is a single stainless-steel sink with a black mixer tap.

## BATHROOMS

Both bathrooms have a combination of ceramic tiles by **Saloni** with different finishes in white and grey tones.

The main bathroom includes a unit measuring 140cm unit by **Jacob Delafon** in *Arlington Oak* colour with two drawers and an integrated double washbasin. The second bathroom has a unit measuring 80cm, also by **Jacob Delafon**, in matte white, with two drawers and a single washbasin. Mirrors are included in both bathrooms.

Showers include a white, imitation chalk effect shower tray and fixed glass shower screens. Taps and shower fittings are by **Tres** and sanitary fittings are by **Jacob Delafon**.



## EXTERIOR CARPENTRY

For the exterior carpentry, we have chosen a sliding door for the living room and casement windows for the bedrooms, all by **STRUGAL**, in aluminium colour, with double-glazing and safety-glass patio doors leading out to the terrace.

The bedroom windows have motorised rolling shutters in the same material and colour with air vents to comply with interior air quality standards.



## INTERIOR CARPENTRY

**Solana Village** has a combination of interior carpentry finishes to create a blend of warmth and modernity. The interior doors are in a plain design with a soft grey finish. The main entrance door is a security door.

All the bedrooms have fitted wardrobes with sliding melamine doors finished in natural oak colour, “Finsa Cambrian Oak Segá”. The interior is lined and finished with a hanging rail, luggage shelf, and drawers.



## FLOORING

The flooring throughout the apartment is a large format (90x90cm) ceramic tile by **Saloni**, model *Petralava Ivory*, with skirting tiles in the same model and colour.

The design is completed by continuing the same flooring, in its non-slip version, onto the terraces and solarium areas.



## FACILITIES

Every apartment at **Solana Village** has a hot and cold air conditioning system, installed through ducts located in the false ceiling. The homes will also have a mechanical ventilation system to provide maximum interior air quality in accordance with current legislation.

The homes have an individual **air-to-air heat pump system** to provide domestic hot water.

Solar panels have been installed on the roof to provide **renewable electrical energy** for the development, providing part of the building's energy requirements.

The apartments include the installation of an energy-saving LED lighting package as detailed in the project plans.

Light switch fittings and socket covers are by **BJC** in an aluminium mercury colour, with USB charging points in the kitchen and master bedroom. All apartments have a fibre-optic, TV, and satellite installation. There are also telephone points, data, and TV in the kitchen, living/dining room, and bedrooms.

The building has insulated walls, roof, and windows, and holds a category **“B” energy efficiency certificate**.



## EXTERIORS

The exterior communal areas at the **Solana Village** development include a large pool with a shower, WC, and lighting. There are spacious landscaped areas with an automatic watering system and every building has a lift with a capacity for 6 passengers, suitable for wheelchair users.

Each home at **Solana Village South** will have an assigned, numbered parking space. Every parking space has empty conduit tubing to allow for the installation of a charging point for electric vehicles. Access to the parking area will be via a motorised door operated by remote control.

The homes also have a basement storeroom, which will be painted, with flooring by **Saloni**, and a light switch.





TAYLOR WIMPEY DE ESPAÑA, S.A.U. reserves the right to modify or change the materials and distribution of the abovementioned specifications and plans to improve the project in accordance with the criteria of the project technicians.

\*The images and project plans are purely for illustrative purposes. This content does not constitute a contract, part of a contract, or guarantee.

